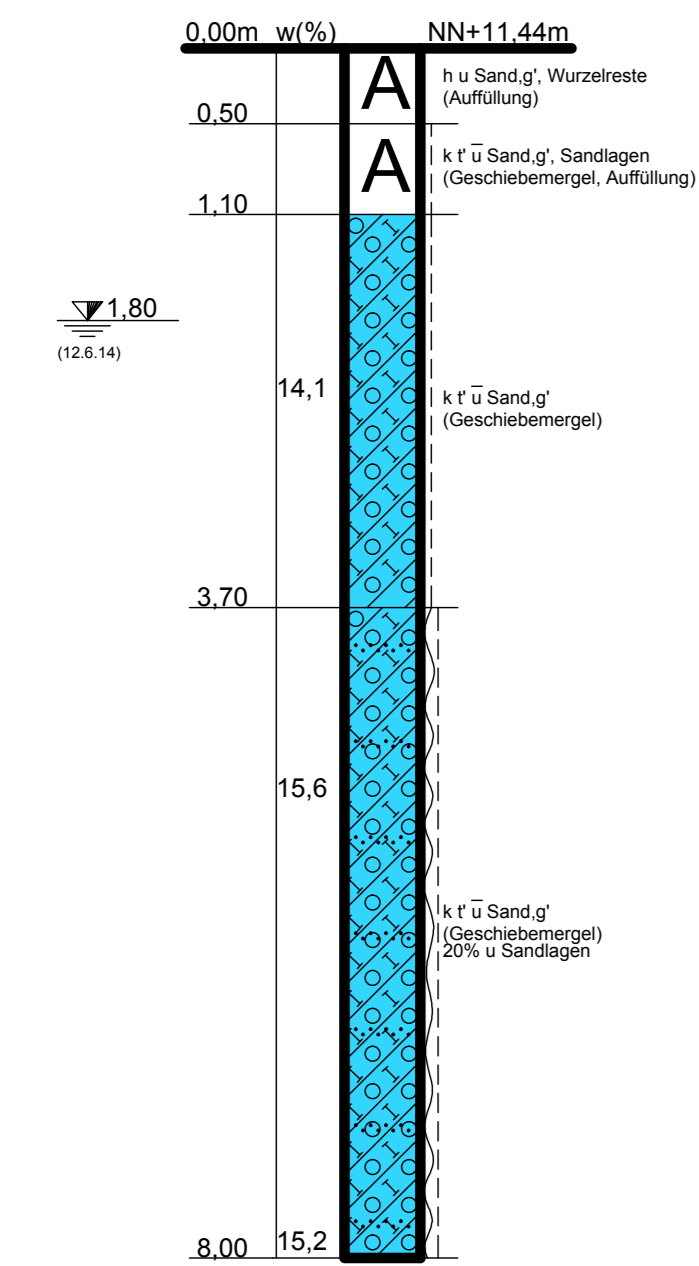
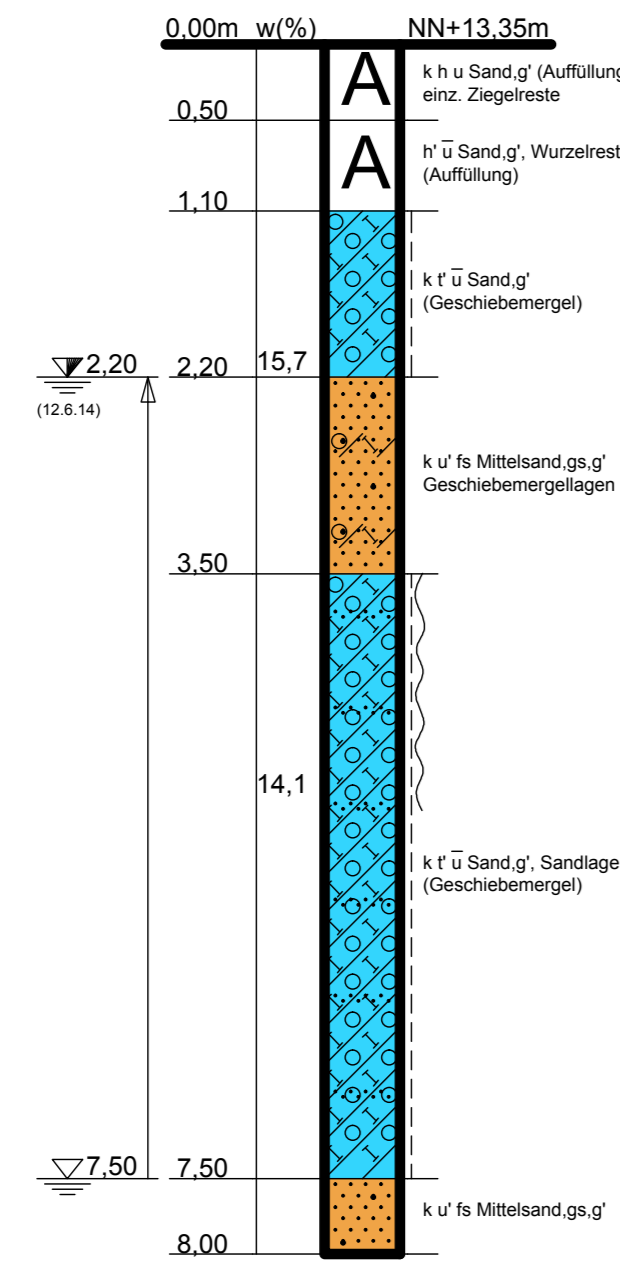


# Bodenprofile M.1:50

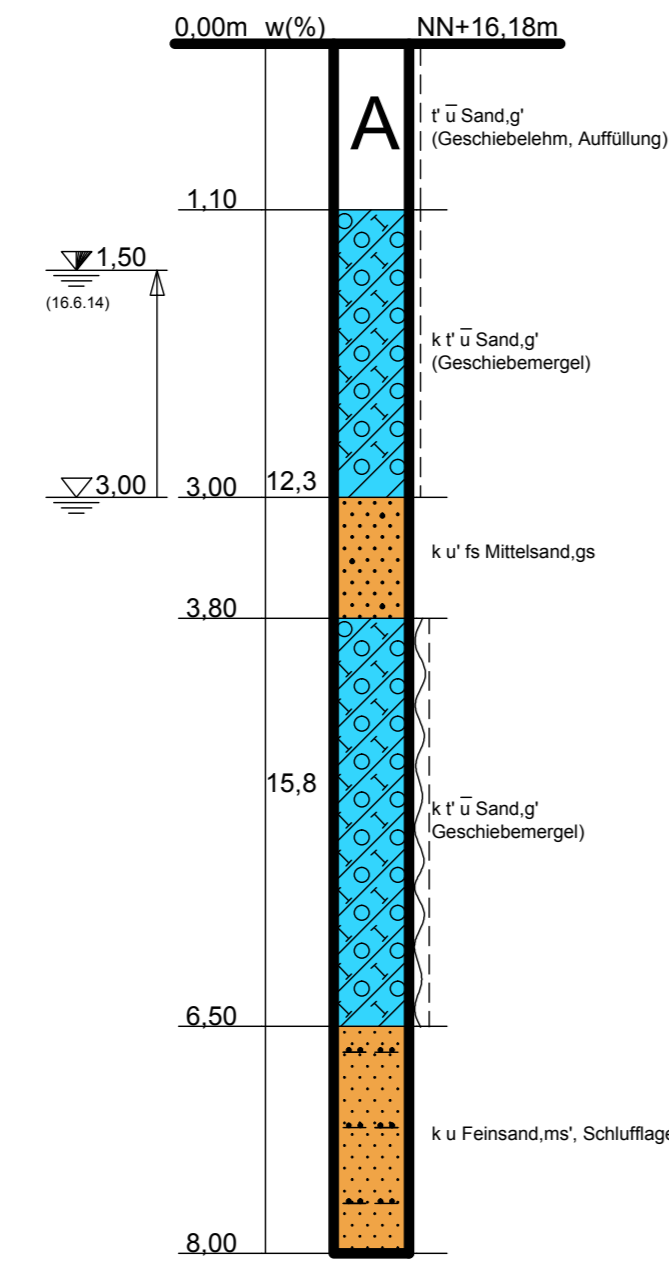
SB 22  
(12.06.2014)



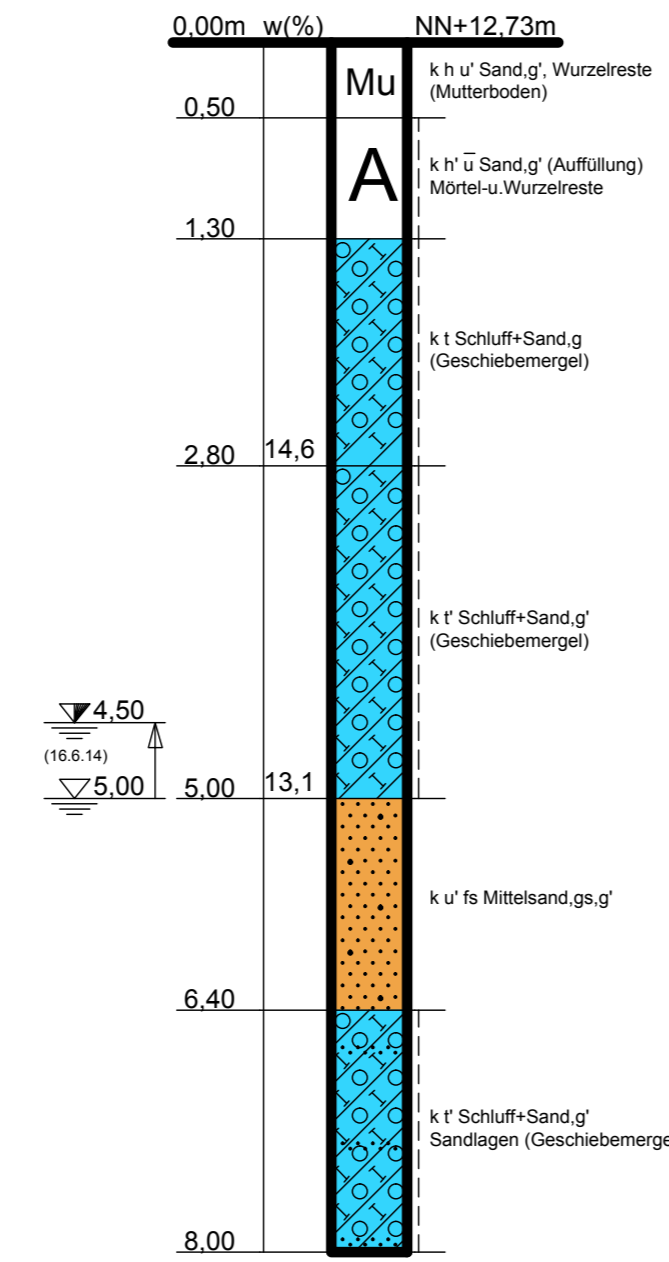
SB 16  
(12.06.2014)



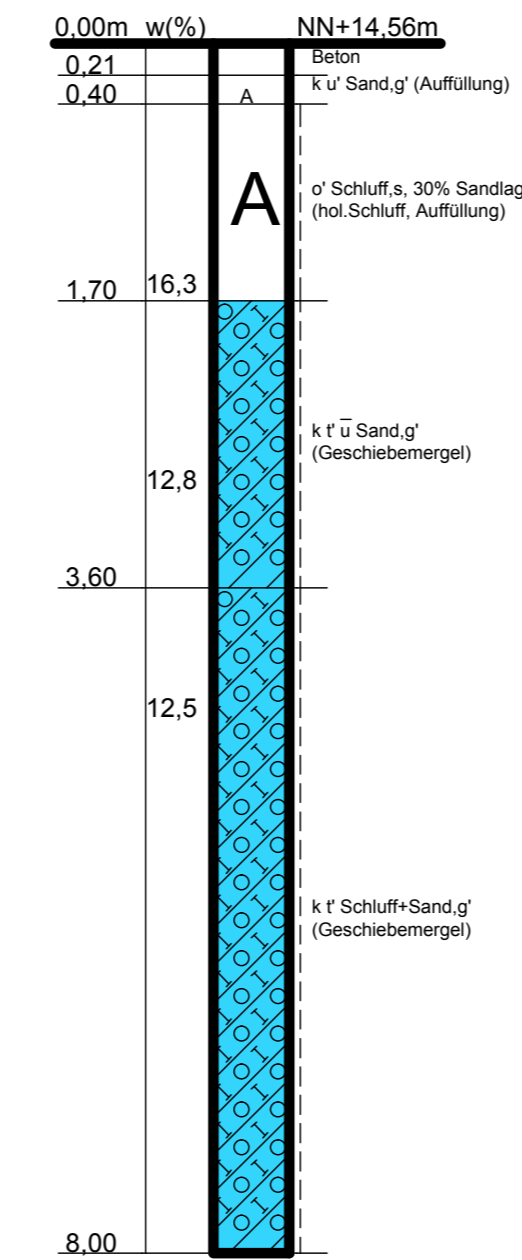
SB 17  
(16.06.2014)



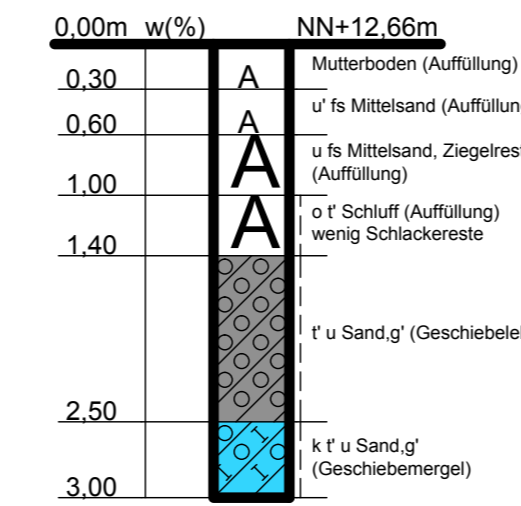
SB 15  
(16.06.2014)



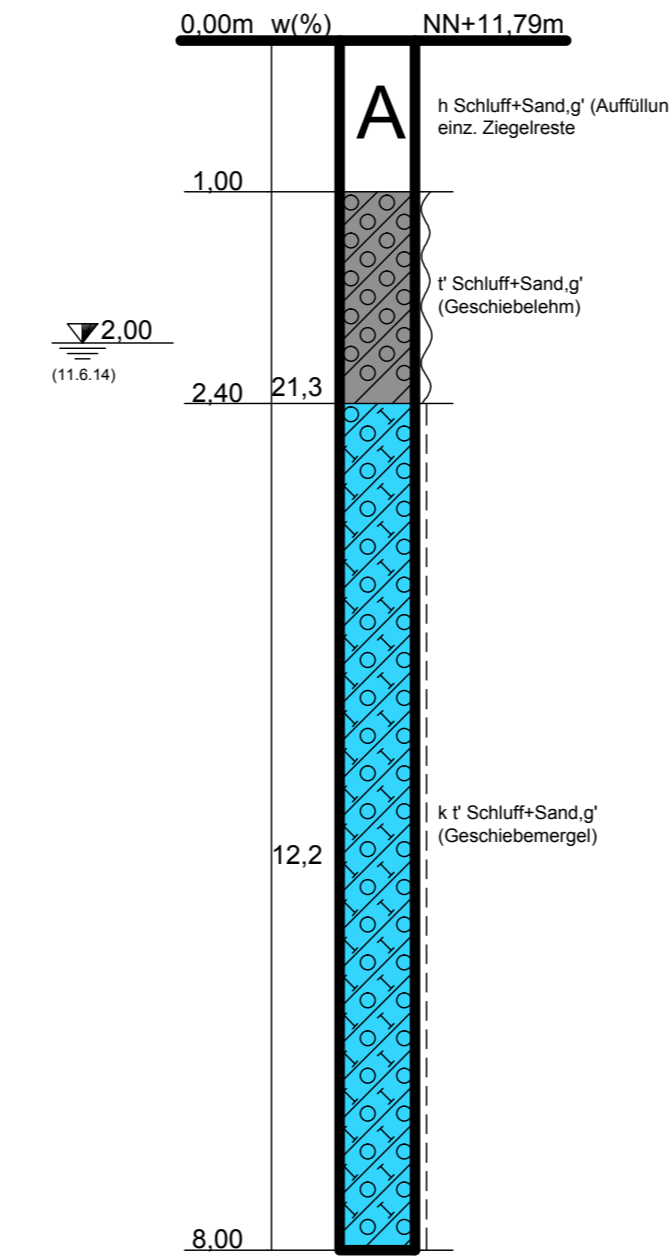
SB 14  
(10.06.2014)



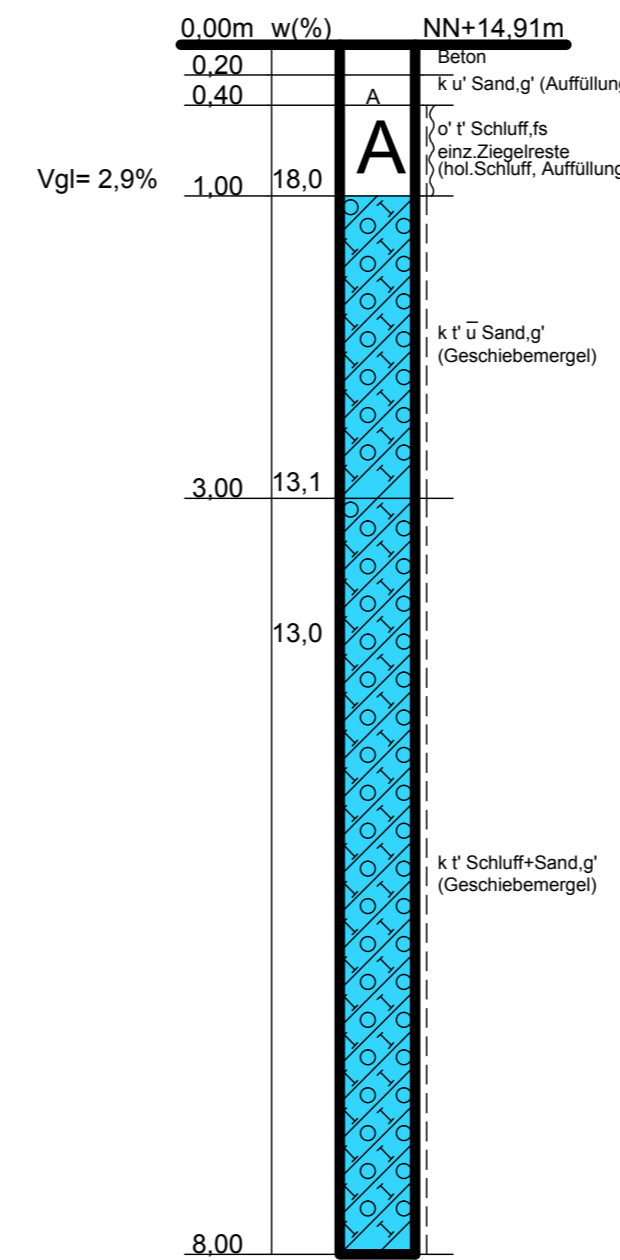
BS 4/04  
(10.03.2004)



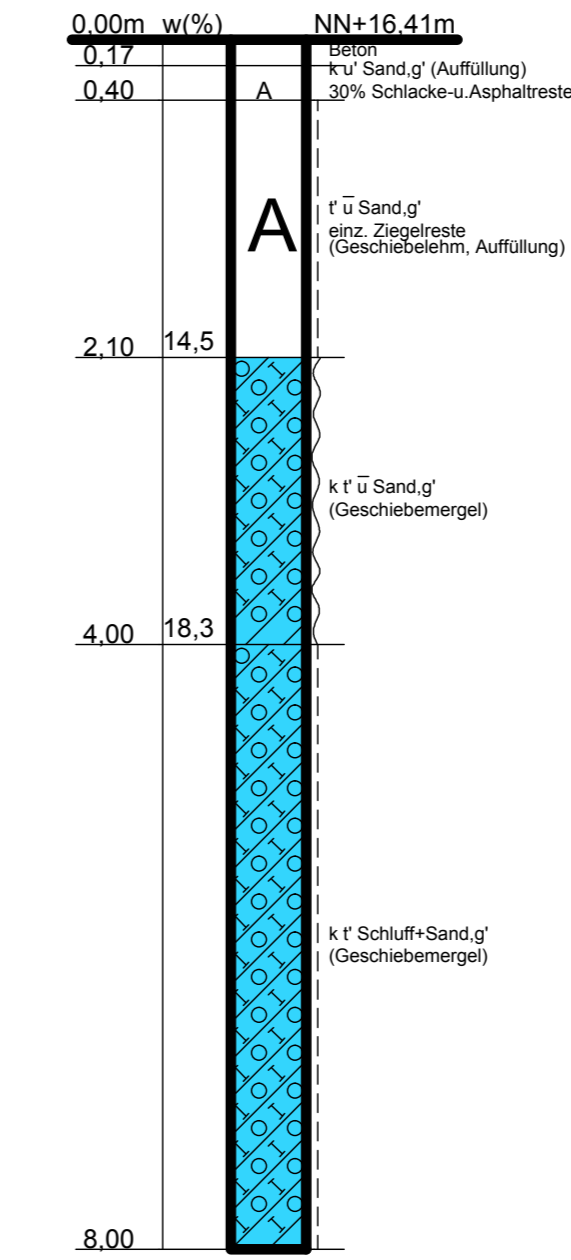
SB 11  
(11.06.2014)



SB 12  
(10.06.2014)



SB 13  
(13.06.2014)



Lageplan siehe Anlage: 150/14 - 1

BAU- VORHABEN		Bad Oldesloe B-Plan Nr. 107	
AUFTRAGGEBER		Grundstücksgesellschaft Claudiusstraße mbH Gertrud-Pardo-Weg 7 22297 Hamburg	
DAR- STELLUNG			
Bodenprofile - Erschließungsstraßen			
GEZEICHNET	04.07.14 Fr.	MASSSTAB	1:50
GEPRÜFT		PLAN	150/14 - 2
Baukontor Dümcke GmbH		INGENIEUR- UND UMWELTBERATUNG ERD- UND GRUNDBAULABORATORIUM ALFSTRASSE 26 RUF 0451/30037-0 23552 LÜBECK FAX 0451/30037-11 E-Mail: info@baukontor-duemcke.de	